



WF STEEL & CRANE

CUSTOM MODULAR STEEL FABRICATION
OVERHEAD CRANES
CRANE SERVICE & MAINTENANCE



WF Steel & Crane

The WF executive group has been together for over 20 years and along with the WF Management Team, we have faced and overcome many challenges together.

We look forward to the future and to the new challenges and opportunities it will bring, and are very excited to see what this company will achieve in the next 20 years.



WF is a privately owned Canadian company that is made up of 200 employees that all live in the local community.

We understand the importance of having the correct balance between family and work, so we work to provide a workplace that supports our employees so that they can best achieve this. WF believes that when employees find this balance, they will be more healthy and productive, so with this vision in mind, we believe that our workforce is unique to the industry and can offer the highest value steel and crane solutions for our customers.

WF has big company capabilities, but with an exceptional high level of customer service, that you would expect from a family run business.



Our people make us great

Our workforce is made up of highly qualified and dedicated employees.

Together, we provide valued solutions to meet the requirements of both the structural steel and electric crane industries.

Looking for a new opportunity? Join a progressive company that encourages growth and rewards hard work!



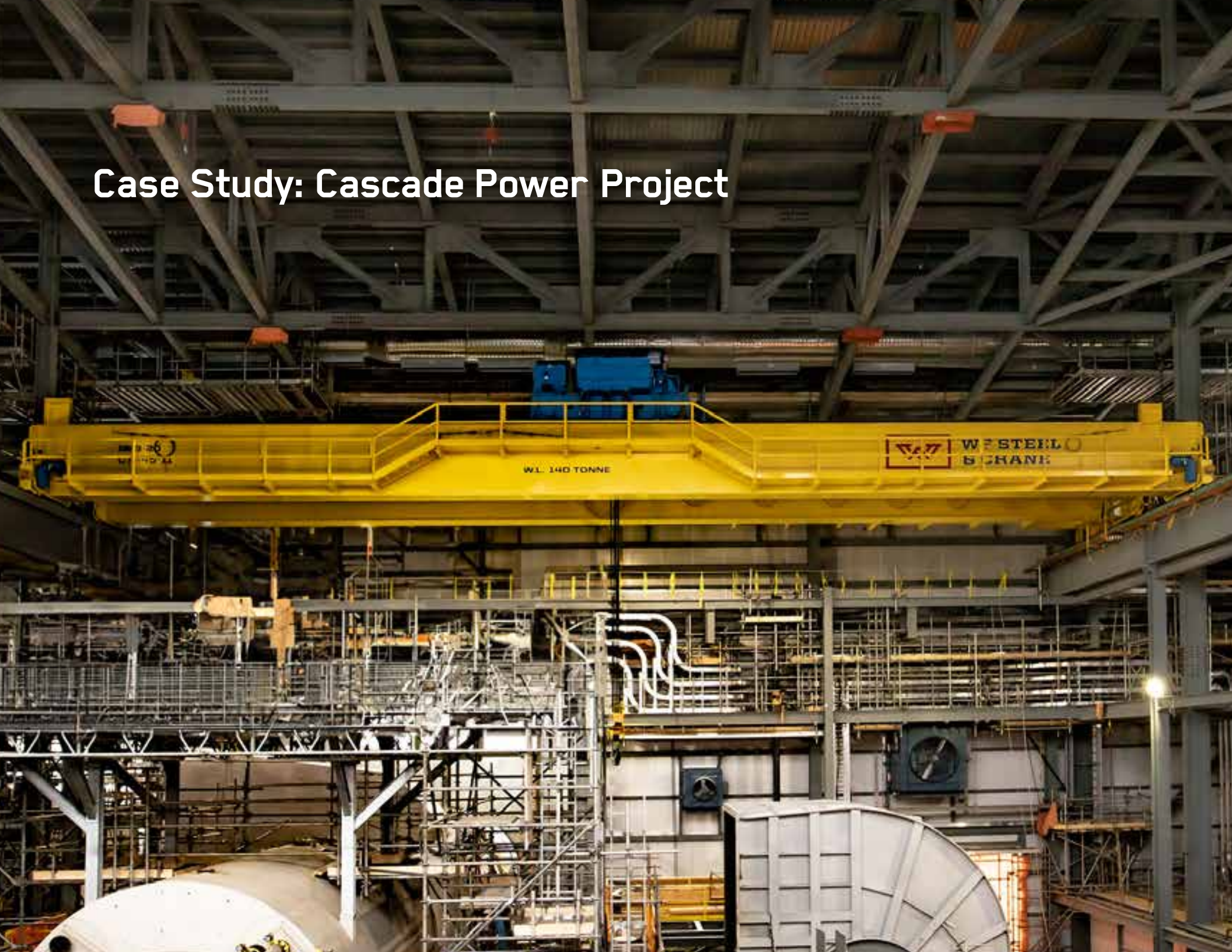
**WF STEEL
& CRANE**



**WE BUILD
SOLUTIONS**



Case Study: Cascade Power Project



Cascade Power Project is a 900 megawatt (MW) combined cycle power generation facility being constructed in Yellowhead County, approximately 12 km Southwest of Edson, Alberta.

- Black & Veatch joint venture with PCL Construction
- Awarded (2) 140 metric tonne cranes to WF
- The cranes were completely custom per the clients' specifications
- (2) 140 tonne top running double girder cranes each with (1) 140 tonne main hoist and (1) 22 tonne auxiliary hoist
- All crane motors were powered by variable frequency drives for superior performance and motor control



Case Study: Komatsu



W.L. 40 TON

KOMATSU



WF STEEL
6 CRANE

C7219-16

C7219-21

W.L. 3 TON

C7219-16

COMATSU
DANGER
LIVE
TESTING IN
PROGRESS

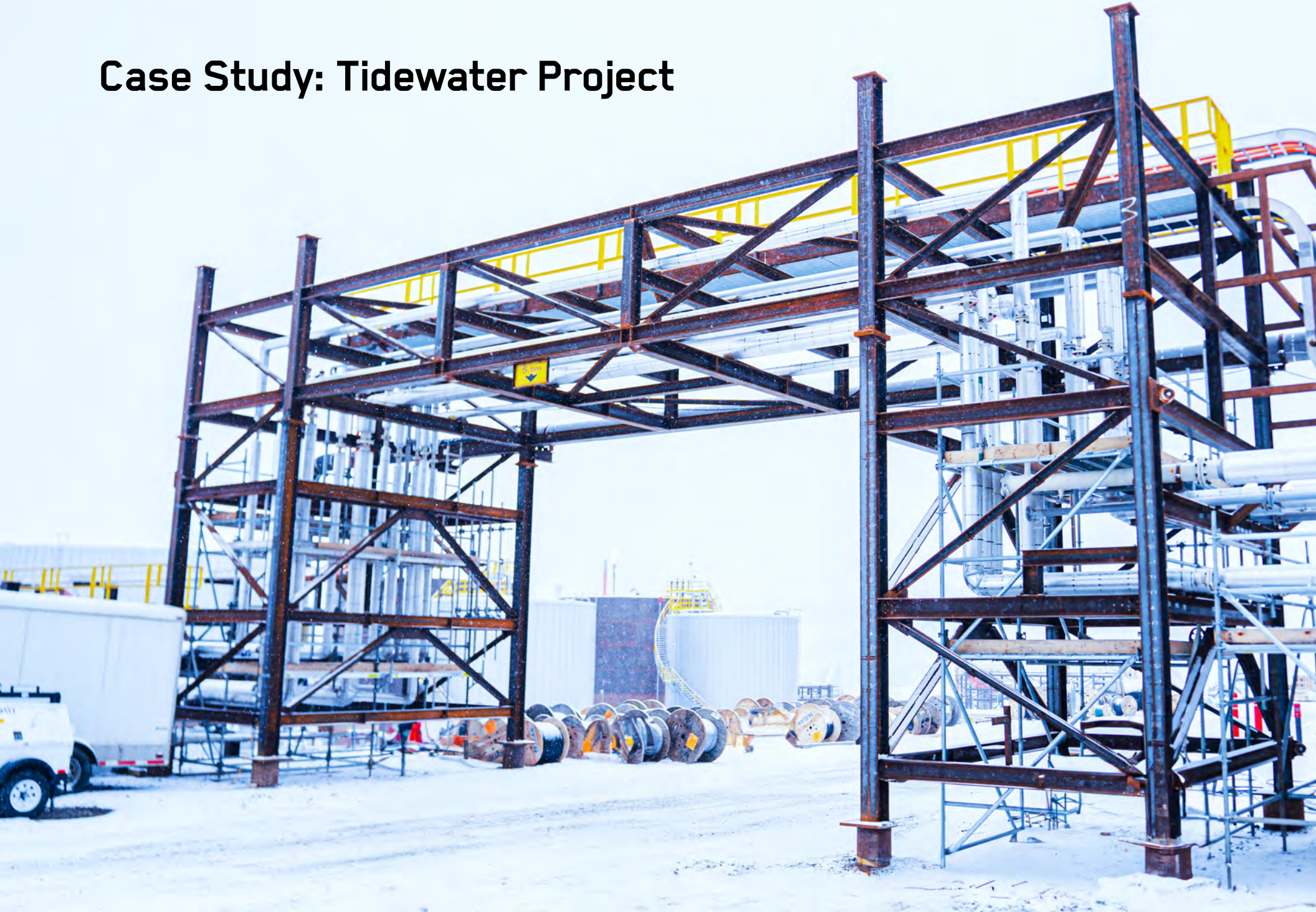
Komatsu is a world leader in heavy-duty mining and construction equipment manufacturing and service.

- (2) 150-ton top running double girder cranes each fit with (1) 100-ton and (1) 50-ton hoists
- (2) 40-ton top running double girder cranes each fit with (1) 30-ton and (1) 10-ton hoists. The purpose of these cranes is for the maintenance and repair of lighter equipment
- (12) column mount 3-ton jib cranes for individual station repair work
- 50-ton and 100-ton electric transfer carts

KOMATSU



Case Study: Tidewater Project





The Prince George Refinery is a light oil refinery owned by Tidewater Midstream & Infrastructure Ltd. The project requirements were connection design, detailing, fabrication and shop assembly.

- 940-ton of structural steel
- Thirteen (13) modules fabricated and fully assembled prior to shipping to site
- 390-ton of building steel for pre-treatment buildings including miscellaneous grating, floor plate, handrails, ladders, and stairs.

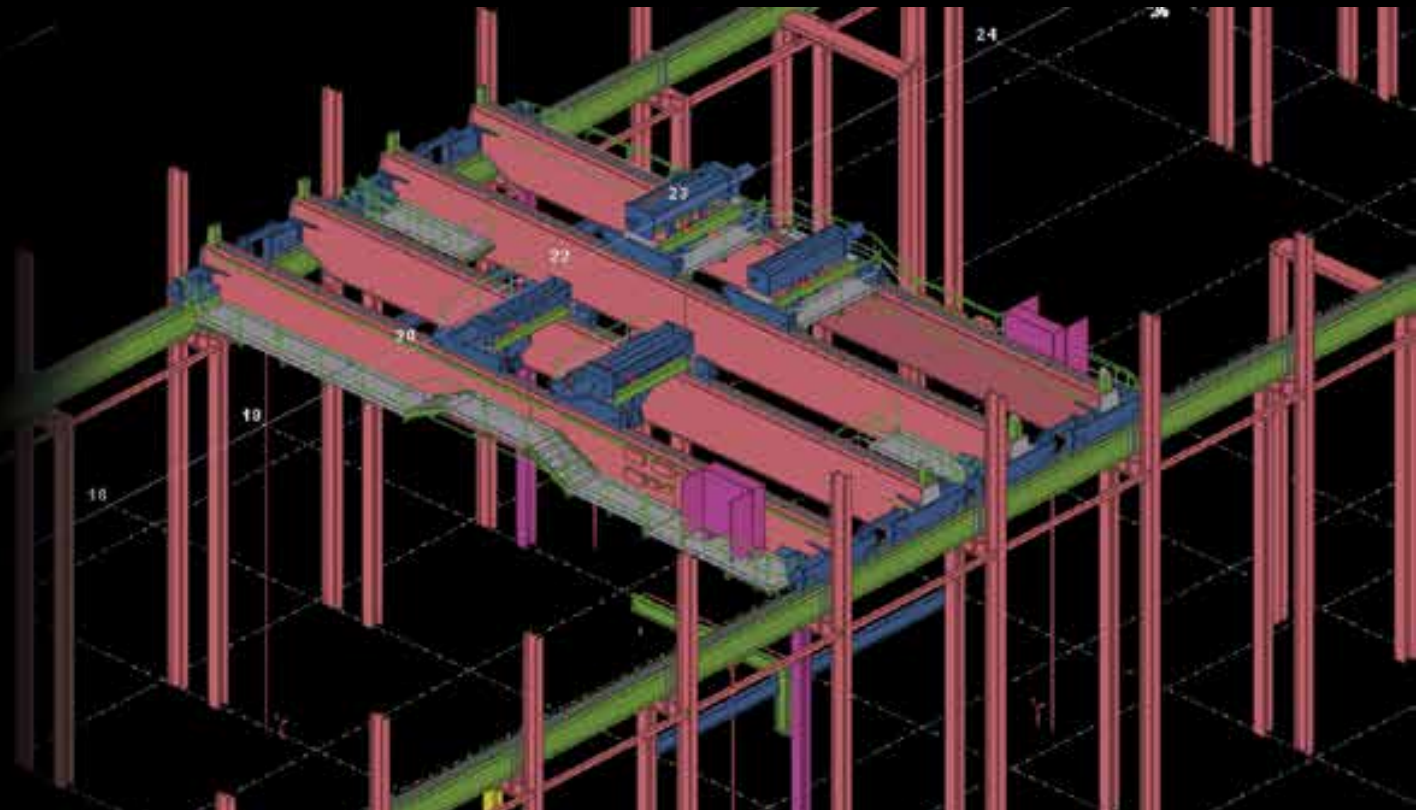
WF uses Tekla Structures software for the detailing and drafting of all the crane and structural jobs.



(2) 150 ton double girder cranes with 100-ton and 50 ton hoist. WF designed both cranes in-house. General contractor - Scott Builders Inc.

End User - Komatsu

Job Location - Sparwood, BC



90 tonne double girder outdoor rated cranes with 90 tonne main hoist and 20 ton auxiliary hoist. All design and detailing done by WF in-house engineering.

Client - TR Ledcor

End User - Suncor

Job Location - Fort McMurray, AB

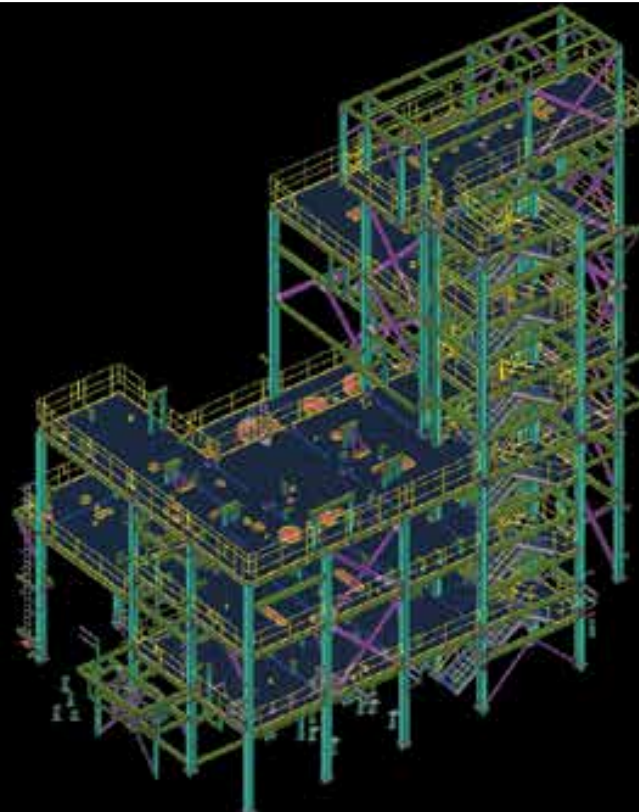


WF fabricated 940 ton of structural steel. Total (13) modules fabricated and 390 ton of building steel for pre-treatment buildings.

General Contractor - THAK Projects Ltd.

End User - Tidewater

Job Location - Prince George, BC



LOCATIONS

Our production facilities are strategically located in one of Western Canada's largest industrial parks, 3 minutes from the Edmonton International Airport, 20 from downtown, and minutes from all major, wide-load corridors.

NORTH PLANT

This shop is used for crane fabrication, service, and steel fabrication. The structural fabrication area is setup primarily for stick steel fabrication but can also accommodate assembled modules.

- Structural fabrication area: 28,600 ft²
- Outside crane way area: 64,000 ft²
- Graveled storage area 6.1 acres
- Crane fabrication area 25,000 ft²
- Indoor parts storage area: 9,600 ft²

SOUTH PLANT

This shop is used for structural steel fabrication and with 28 ft under the hook, it is ideal for module assembly. This plant has 40 welding stations for maximizing production capacity.

- Fabrication area: 48,000 ft²
- Outside crane way area: 33,000 ft²
- Includes gravel storage yard sitting on 6.5 acres





**WF STEEL
& CRANE**

Structural Steel Fabrication and
Module Assembly Facility

SOUTH PLANT

2107 – 6 Street
Nisku, Alberta, T9E 7X8
Phone: 1-587-410-4830

Crane Manufacturing and Structural Steel
Processing and Fabrication Facility

NORTH PLANT

602 – 22 Avenue
Nisku, Alberta, T9E 7X6
Phone: 1-587-404-0625

Calgary Office

SALES AND FIELD SERVICES

170, 7307 – 106 Avenue SE
Calgary, AB T2C 4Z8

Langley Office

WF Crane & Service (Western)
Ltd., Units 1 & 2, 20097-92A Ave
Langley, BC, V1M 3A5

Mississauga Office

WF Crane & Service (Eastern) Ltd.,
Unit 9, 215 Traders Boulevard East
Mississauga, ON, L4Z 3K5