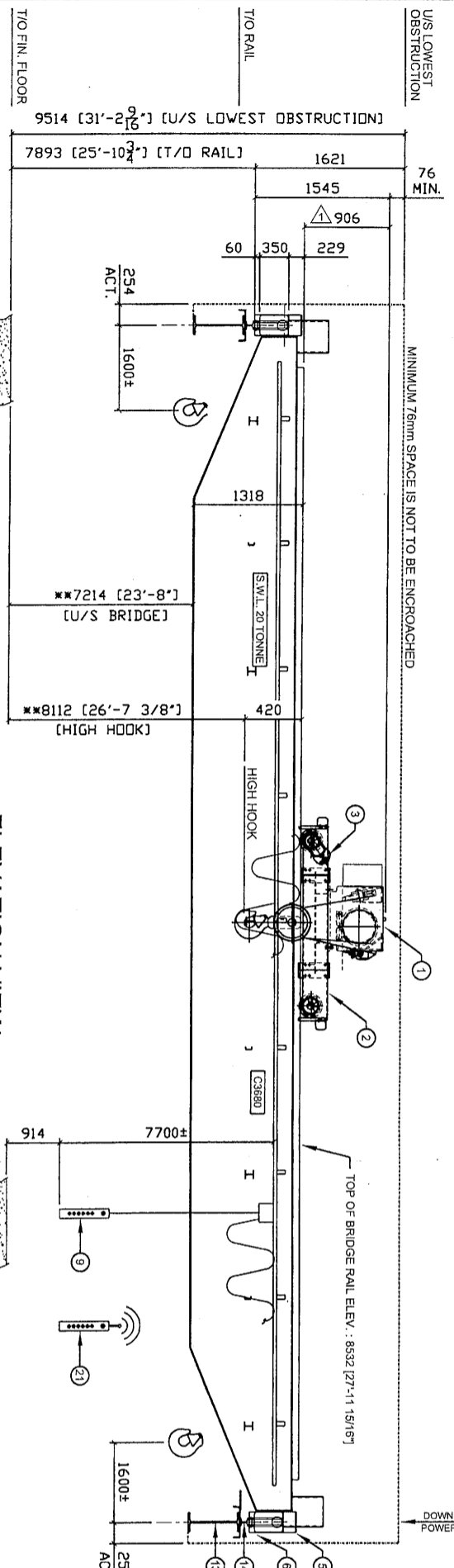
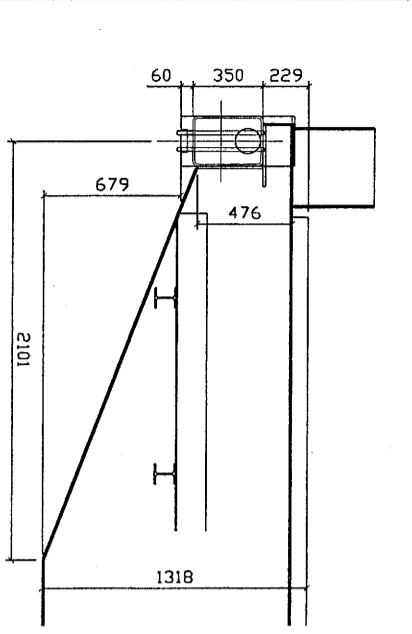


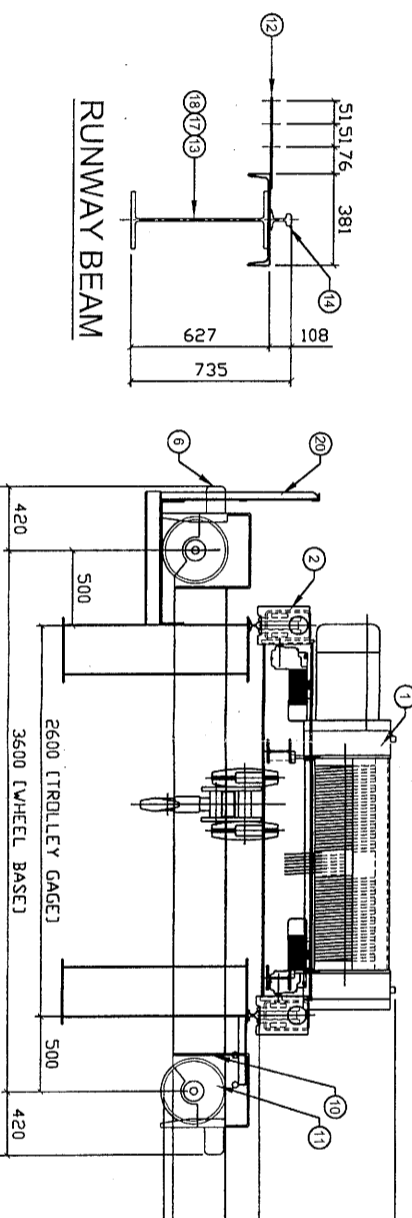
PLAN VIEW



ELEVATION VIEW



BRIDGE TO ENDTRUCK CONNECTION



SECTION 'A-A'

MATERIAL AND PARTS LIST FOR 1-CRANE (1-CRANE REQUIRED)

ITEM QTY	COMPONENT	DESCRIPTION
1	1 HOIST	GH-20-B-4104-H2 c/w UPPER & LOWER LIMIT SWITCH, OVERLOAD LIMIT SWITCH, SECURITY LIMIT SWITCH, & WIRE ROPE GUIDE
2	1 TROLLEY	GH BRAL CRAB c/w GH-TR-250 SERIES ENDTRUCKS & RUBBER BUMPERS (GAGE = 2600mm) (W.B. = 2000mm) (W.C. = 65mm)
3	2 TROLLEY TRAVEL MACHINERY	GH STD.
4	2 BRIDGE TRAVEL MACHINERY	WC-110
5	2 BRIDGE GRIDER (WELDED)	WF BOX GIRDER 432mm x 1239mm c/w 30lbs ASCE RAIL
6	2 END TRUCKS	GH-TR-400-NS c/w RUBBER BUMPERS & 400mm WHEELS (W.B. = 3500mm)
7	1 ELEC. PANEL, HOIST-TROLLEY	WF STD. ON TROLLEY
8	1 ELEC. PANEL, BRIDGE	WF STD. ON SERVICE PLATFORM
9	1 PUSH BUTTON PENDANT	SIEMENS DST-7 c/w EMERGENCY STOP
10	1 POWER FEED PENDANT	FLAT CABLE FESTICON SUSPENDED FROM PIPE TRACK
11	1 POWER FEED, HOIST-TROLLEY	FLAT CABLE FESTICON SUSPENDED FROM PIPE TRACK
12	3 POWER FEED, BRIDGE	DUCT-O-BAR FE-2008 [3 BAR - 250 AMP] @ APPROX. 87 METERS c/w P-200VTS COLLECTOR SHOES
13	2 RUNWAYS	EXISTING W610x101 c/w C310x31
14	2 RUNWAY RAIL	EXISTING W920x201
15	0 FINISH: PRIMER, CRANE	SEE DRAWING G3 IN X-STEEL UNDER S3880A
16	1 FINISH: PAINT, CRANE	EXISTING 60lb. ASCE RAIL
17	0 FINISH: PRIMER, RUNWAYS	N/A
18	0 FINISH: PAINT, RUNWAYS	SHERWIN WILLIAMS DTM WF YELLOW #666737
19	1 DISCONNECT SWITCH	N/A
20	1 SERVICE PLATFORM	WF STD. ON SERVICE PLATFORM
21	1 RADIO REMOTE CONTROL	WF STD. ON BRIDGE
22	1 RADIO CONTROL PANEL	IKUSI REMOTE TM70
23	3 LIGHTS	STD. ON SERVICE PLATFORM

GENERAL SPECIFICATIONS

RATED CAPACITY	20 TONNE
BRIDGE SPAN	21622mm [70'-11 3/8"]
LIFT AVAILABLE ON HOIST	11900mm [39'-0 1/2"]
HOISTING SPEED(S)	4.8/0.8 MP/M
TROLLEY SPEED(S)	24/6 MP/M
BRIDGE SPEED(S)	36/9 MP/M
HOIST-TROLLEY WEIGHT	2040 kg
BRIDGE WEIGHT (APPROX.)	15500 kg
MAXIMUM STATIC WHEEL(CORNER) LOAD	143 kN
CRANE CLASSIFICATION	CMAA CLASS 'C'
ELECTRICAL CLASSIFICATION	NEMA 3
MAIN POWER SUPPLY (V/PH/Hz)	480/3/60
CRANE SURFACE PREPARATION	SSPC-SP3
RUNWAY SURFACE PREPARATION	SSPC-SP3
SHOP TEST / O.C.	WF STD. <input checked="" type="checkbox"/> INSIDE <input type="checkbox"/> OUTSIDE
ENVIRONMENT	<input checked="" type="checkbox"/> INSIDE <input type="checkbox"/> OUTSIDE
TAG OR SPECIAL MARKING	SWL - 20 TONNE / C3680
SPECIAL REQUIREMENTS	N/A

CUSTOMER: WF WELDING & OVERHEAD CRANES

TITLE: GENERAL ASSEMBLY

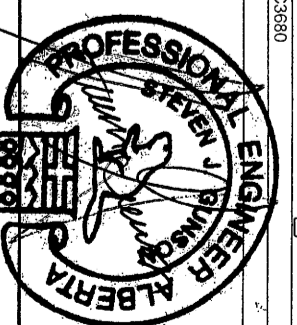
20 TONNE T.R.D.G. OVERHEAD CRANE

DRAWN BY: MS DATE: 2006/02/10 DESTINATION: 410 24 AVE NISKU AB

CHECKED BY: MS PDDO: 2006/02/10 JOB NO.: C3680 REV.: 3

SCALE: N.T.S. DRAWING NO.: C3680-01

COMP. REF. - WF - TRSG-021



NOTES: (CANADIAN)
 1. N/A - NOT APPLICABLE
 2. N/C - NOT IN CONTRACT
 3. THESE CRANES FOR AND NOT BE REPRODUCED, DISTRIBUTED, OR DISCLOSED EXCEPT AS SPECIFICALLY AUTHORIZED IN WRITING BY WF WELDING & OVERHEAD CRANES LTD.
 4. STEEL, IS TO CONFORM TO CSA S300 FOR WIDE FLANGE I.B.S. SHAPES AND MINIMUM CSA S300 FOR ALL OTHER SHAPES AND PLATE WORK.
 5. BOLTS ARE TO CONFORM TO A.S.T.M. A325, S19 UNLESS NOTED OTHERWISE.
 6. WELDS TO C.S.A. W59 LATEST EDITION.
 7. ALL CONSUMABLES FOR STRUCTURAL STEEL TO BE CONTROLLED THROUGHOUT THE CONSTRUCTION PERIOD.
 8. ALL DIMENSIONS TO BE UNLESS OTHERWISE NOTED.
 9. ALL DIMENSIONS TO BE UNLESS OTHERWISE NOTED.
 10. ALL DIMENSIONS TO BE UNLESS OTHERWISE NOTED.

Permit to Practice No. P07855

REV.	DATE	DESCRIPTION	BY	CHK.
3	2006/02/21	REVISED SPAN - ISSUED FOR INFORMATION	MS	PS
2	2006/02/27	ISSUED FOR FABRICATION	MS	BC
1	2006/02/16	REVISED TROLLEY - REISSUED FOR APPROVAL	MS	MS
0	2006/02/15	ISSUED FOR APPROVAL	MS	MS

WF WELDING & OVERHEAD CRANES LTD.
 705 - 23 AVENUE
 NISKU, ALBERTA, T9E 7V5
 Telephone No. (780) 955 - 7671
 Fax No. (780) 955 - 7690