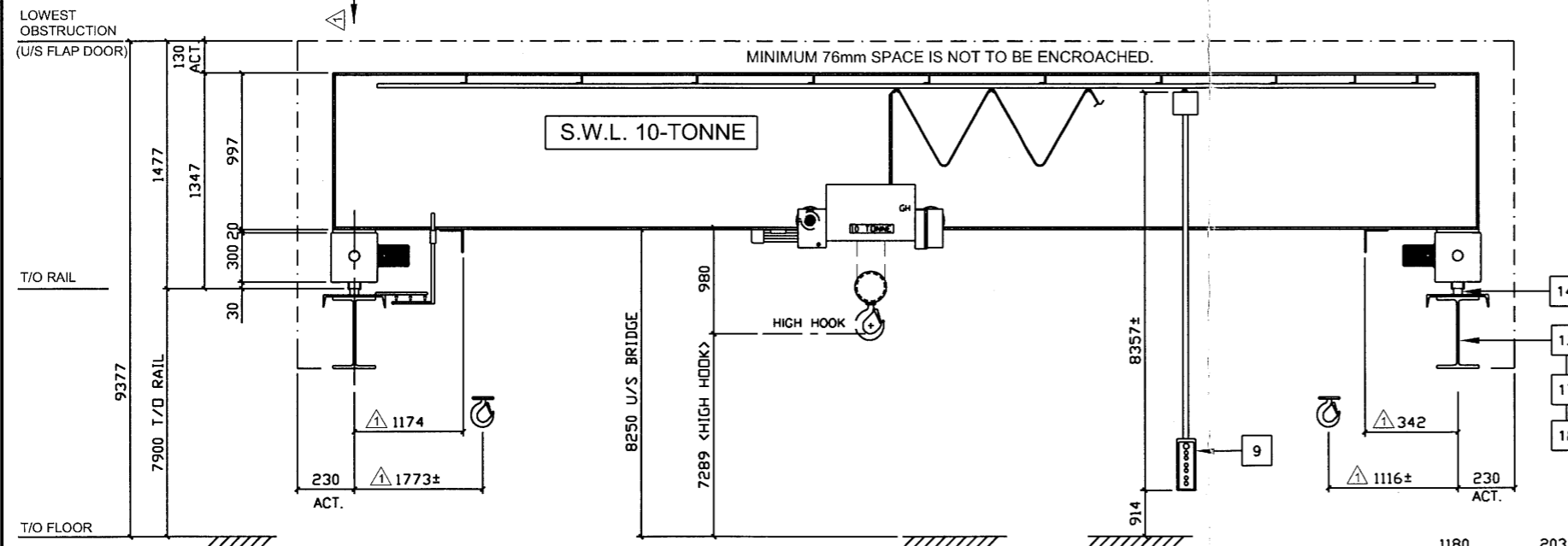
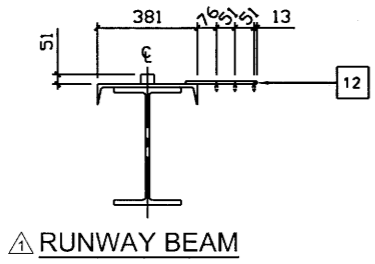


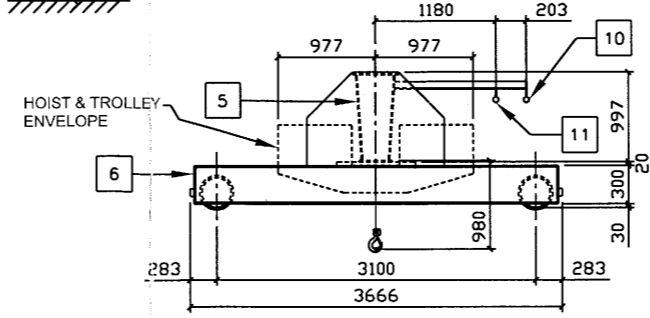
PLAN VIEW



ELEVATION VIEW



△ RUNWAY BEAM

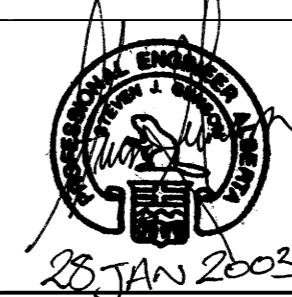


SECTION A-A

MATERIAL AND PARTS LIST FOR 1-CRANE [1-CRANE REQUIRED]			
ITEM QTY	COMPONENT	DESCRIPTION	
1	1	HOIST	GHE-10-R-2108-H1 c/w UPPER & LOWER LIMIT SWITCH, OVERLOAD LIMIT SWITCH, SECURITY LIMIT SWITCH, AND WIRE ROPE GUIDE
2	1	TROLLEY	GH STD. - LOW HEADROOM
3	1	TROLLEY TRAVEL MACHINERY	GH STD.
4	2	BRIDGE TRAVEL MACHINERY	GH STD.
5	1	BRIDGE BOX (WELDED)	610 x 997 SEE DRWG. C2808C-02 & C2808C-03
6	2	END TRUCKS	GH-TR-250-NS SERIES c/w RUBBER BUMPERS & 250# WHEELS (W.B= 3100mm) & (W.G.= 65mm)
7	1	ELEC. PANEL, HOIST-TROLLEY	GH STD. ON TROLLEY
8	1	ELEC. PANEL, BRIDGE	W.F. STD ON BRIDGE
9	1	PUSH BUTTON PENDANT	SIEMENS DST 7 c/w EMERGENCY STOP
10	1	POWER FEED, PENDANT	FLAT CABLE FESTOON c/w PIPE TRACK
11	1	POWER FEED, HOIST-TROLLEY	FLAT CABLE FESTOON c/w PIPE TRACK
12	3	POWER FEED, BRIDGE	EXISTING: DUCT-O-BAR (250AMP) COLLECTOR: P200 V15 DOUBLE SHOE
13	0	RUNWAYS	EXISTING: W610x101 c/w C380x50
14	0	RUNWAY RAIL	51mm SQ. BAR
15	1	FINISH: PRIMER, CRANE	TOWER T101QD - GREY
16	1	FINISH: PAINT, CRANE	TOWER T210 - YELLOW
17	0	FINISH: PRIMER, RUNWAYS	N/A
18	0	FINISH: PAINT, RUNWAYS	N/A
19	1	DISCONNECT SWITCH	W.F. STD. ON BRIDGE
20			
21			
22			
23			
24			
25			
26			
27			
28			
29			
30			

GENERAL SPECIFICATIONS

RATED CAPACITY	10 TONNE
BRIDGE SPAN	21625mm
LIFT AVAILABLE ON HOIST	9000mm
HOISTING SPEED(S)	9.6/1.6 MPM
TROLLEY SPEED(S)	24/6 MPM
BRIDGE SPEED(S)	40/10 MPM
HOIST-TROLLEY WEIGHT (APROX.)	1500kg.
BRIDGE WEIGHT (APROX.)	6230kg.
MAXIMUM STATIC WHEEL(CORNER) LOAD	70kN
CRANE CLASSIFICATION	CMAA CLASS C
ELECTRICAL CLASSIFICATION	NEMA 3
MAIN POWER SUPPLY (V/PH/Hz)	460/3/60
CRANE SURFACE PREPARATION	SSPC SP3
RUNWAY SURFACE PREPARATION	N/A
SHOP TEST / Q.C.	W.F. STD. <input checked="" type="checkbox"/> OTHER <input type="checkbox"/>
ENVIRONMENT	INSIDE <input checked="" type="checkbox"/> OUTSIDE <input checked="" type="checkbox"/>
TAG OR SPECIAL MARKING	N/A
SPECIAL REQUIREMENTS	



ENTERED SEP 6 - 2002

SHOP NOTES (CANADA)

- N.A. = NOT APPLICABLE
- N.L.C. = NOT IN CONTRACT
- PLEASE CHECK FOR AND NOTE ANY NON-COMFORMING DIMENSIONS, ELEVATIONS AND ELECTRICAL SPECIFICATIONS.
- STEEL IS TO CONFORM TO CSA 300W FOR WIDE FLANGE & I.S.S. SHAPES AND MINIMUM CSA 300W FOR ALL OTHER SHAPES AND PLATE WORK.
- BOLTS ARE TO CONFORM TO A.S.T.M. A325, 3/4" UNLESS NOTED.
- WELDS TO C.S.A. W59 LATEST EDITION.
- ALL CONSUMABLES FOR STRUCTURAL STEEL TO BE CONTROLLED HYDROGEN ELECTRODES E70XX OR E480XX UNLESS NOTED.
- ALL WELDS TO BE 1/4" CONTINUOUS FILLET, FLARE OR BEVEL @ ALL STRUCTURAL JOINTS UNLESS NOTED.

REV.	DATE	DESCRIPTION	BY	CHK.
1	2002/09/06	REVISED FESTOON SIDE - REISSUED FOR FABRICATION	B.T.	---
2	2002/02/06	ISSUED FOR FABRICATION	B.T.	---

INFORMATION INCLUDED IN THIS DRAWING IS PROPRIETARY AND IS NOT TO BE REPRODUCED, DISTRIBUTED, OR DISCLOSED EXCEPT AS SPECIFICALLY AUTHORIZED IN WRITING BY WF WELDING & OVERHEAD CRANES LTD.



W.F. WELDING & OVERHEAD CRANES LTD.  
705 - 23 AVENUE  
NISKU, ALBERTA, T9E 7Y5  
Telephone No. (780) 955 - 7671  
Fax No. (780) 955 - 7690

CUSTOMER:		CACHE HOLDINGS INC.	
TITLE:		GENERAL ASSEMBLY	
10 TONNE T.R.S.G. OVERHEAD CRANE			
DRAFTED BY:	B.T.	DATE:	2002/02/01
CHECKED BY:	---	PPDD:	ASAP
SCALE:	N.T.S.	DRAWING No.:	C2808C-01
		DESTINATION:	410 - 24 AVE, NISKU, AB.
		JOB No.:	C2808
		REV.:	1